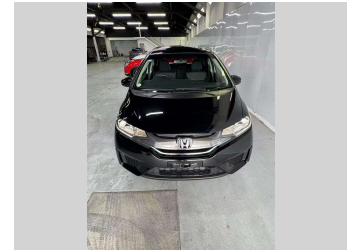
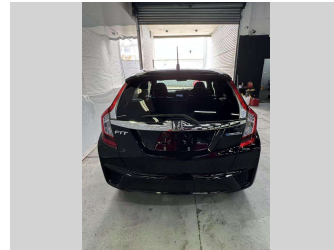
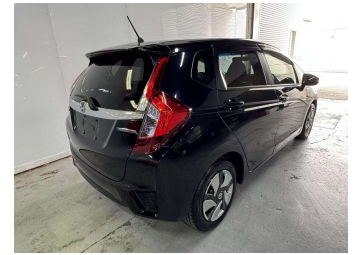


2015 Honda FIT




Purchase Price **\$12,480**

Includes GST
Excludes on-road costs of \$500

Indicative repayments

\$71.02 per week*

Based on a 60 month term & no deposit.
Total repayments (260) = \$18,465.17



Gain peace of mind with
Mechanical Breakdown Insurance. Ask us how.



Top features

- » ABS brakes
- » ABS Braking
- » ABS Braking w/ EBD
- » Air Conditioning
- » Body Kit
- » Body Kit (Factory)
- » Driver airbag
- » Electric Mirrors
- » Passenger airbag
- » Steering control

Body Style	Hatchback	Reg No.	-
Odometer	59,829 km	Ext Colour	Black
Engine	1496 cc, Hybrid	History	-
Fuel Type	Petrol	Seats	5 seats
Transmission	Auto	CO2 Emissions	-
Wheels	-	Energy Economy	-
VIN	7AT08G2YX24007080		
Interior	-		
Safety	-		

Stock ID: 3529



500 Autos | Phone 021 284 8666 | Email sales@500autos.co.nz
360a Church Street, Penrose, Auckland 1061, New Zealand
www.500autos.co.nz

* 500 Autos is not a lender nor a financial adviser. Any amounts displayed should not be seen as an offer of finance or taken as financial advice. The interest rate, fees and loan term used in this calculation may not actually represent those available from lenders. Actual interest rates, fees and loan terms will vary per lender and are typically based on an assessment of your credit risk and responsible lending criteria. Any repayment amounts displayed are indicative only and have been calculated using several other indicative inputs. The interest rate used in this calculation is an arbitrary 12.95%, however exact interest rates vary per lender. The term of the loan used in this calculation is 60 month. Exact terms available vary per lender although options typically include 6, 12, 18, 24, 36, 48 and 60 months. This calculation also includes two typical mandatory fees charged by lenders. These are an account admin fee of \$1.50 per month (other payment frequencies may be available) and a one-off establishment fee of \$495.00. Typically, this fee can be paid upfront or, as in this calculation, be capitalised over the contract term, ie. included in the loan amount. These fees can vary per lender and other non-mandatory fees and charges may also apply. The total amount of repayments has been calculated by multiplying 260 weekly repayments (based on a 60 month term) by the weekly repayment amount of \$71.02 which equals \$18,465.17. This calculator does not consider any of your own personal circumstances and we strongly suggest you seek budgeting advice prior to committing to any loan contract. Responsible lending criteria and lender terms and conditions will likely apply to any finalised loan contract. Proof of security and/or vehicle insurance may also be required before proceeding.